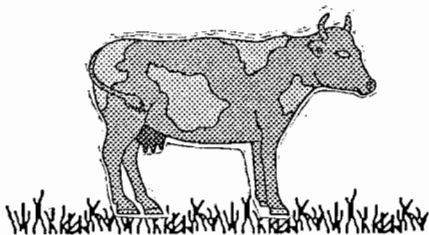


Sample Costs to Produce Irrigated Pasture

Stanislaus County
1989

by

Bill van Riet, Farm Advisor



UNIVERSITY OF
CALIFORNIA
COOPERATIVE EXTENSION

UC Cooperative Extension

SAMPLE COSTS TO PRODUCE IRRIGATED PASTURE
 STANISLAUS AND SAN JOAQUIN COUNTIES
 NOVEMBER 1, 1989

Bill van Riet, Farm Advisor

Copyright 1984 - Regents, University of California

DOLLARS PER ACRE
 SAMPLE COST YOUR COST

CASH COSTS

Mow, fertilize, fence work, etc.:			
3 man and 1.5 tractor hours			31.88
Irrigation labor:			
6 hrs. @ 5.75 \$/hr.			34.50
Irrigation water- power & district tax:			21.00
Fertilizer: 300 lbs. @ 180 \$/ton			27.00
Property taxes:			10.00
Misc. cash costs:			10.00
TOTAL CASH COSTS			134.38

DEPRECIATION:

Irrigation system (gravity):			
original cost- \$ 245.00	20 yr. life		12.25
Tractor: 2 hrs. @ 2.20 \$/hr.			4.40
Fences: cost- \$ 132.50	20 yr. life		6.63
Past. stand: cost- \$ 112.13	10 yr. life		11.21
TOTAL DEPRECIATION			34.49

TOTAL CASH & DEPRECIATION 168.86

INTEREST ON INVESTMENT @ 9 %:			
Land: @ 2520.00 \$/acre			226.80
Irrigation system: 1/2 cost 245.00 \$/acre			11.03
Tractor: 2 hrs. @ 1.21 \$/hr.			2.42
Fences: 1/2 cost 132.50 \$/acre			5.96
Past. stand: 1/2 cost 112.13 \$/acre			5.05
TOTAL INTEREST ON INVESTMENT			251.25

TOTAL COST OF PRODUCTION 420.12

*

COST PER ANIMAL UNIT MONTH AT VARYING PRODUCTION LEVELS

Production level(AUM)	8	10	12	14	16
Cash & Depr. Cost	21.11	16.89	14.07	12.06	10.55
TOTAL COST	52.51	42.01	35.01	30.01	26.26

*

Animal Unit Month (AUM)= 400 pounds total digestible nutrients or 0.8 tons of hay. Any added costs per acre would increase AUM costs accordingly.

1989 SAMPLE COSTS FOR IRRIGATED PASTURE, STANISLAUS/SAN JOAQUIN COUNTIES

By William J. van Riet, Farm Advisor, University of California
Cooperative Extension, Modesto, California

This sheet is for use as a guide in determining irrigated pasture inputs and costs. It is designed to help growers analyze their practices with a view toward increasing efficiency of production. Along with similar sheets on other crops, it also can be used as a basis for making cost comparisons with more profitable alternatives. The figures in the tables are not intended to represent average costs for irrigated pasture. Pastures are often planted on land not well adapted to other crops, and costs may vary widely between individual situations.

**SAMPLE COSTS TO ESTABLISH AN IRRIGATED PASTURE
(Land preparation & additional first year costs)
STANISLAUS & SAN JOAQUIN COUNTIES
NOVEMBER 1, 1989**

CASH COSTS	DOLLARS PER ACRE	
	SAMPLE COST	YOUR COST
Land preparation: disc, level, chisel, border work	3.25 hrs.	61.46
Repairs to equipment		4.00
Seed: 15 lbs. @	1.38 \$/lb.	20.70
Plant: man & tractor	.33 hrs.	5.17
Two clippings: man & tractor	.5 hrs.	7.75
TOTAL CASH COSTS		99.07
Depreciation on tractor: 3.83 hrs. @ 2.20 \$/hr.		8.43
Interest on tractor: 3.83 hrs. @ 1.21 \$/hr.		4.63
TOTAL FIRST YR. ESTABLISHMENT COSTS		112.13

One tenth of the above costs are included in the other table.

Measurement of Feed Obtained From Pasture--To compare the cost of feed from pasture with alternative forages, it is necessary to know how much other feed is replaced by the pasture. An AUM may be used as a unit of measurement. It is equivalent to 400 pounds of TDN, or 13.3 pounds of TDN per day for a month. Feed requirements for animals on pasture can be converted to this basis.

Animal unit conversion factors for different kinds, ages and sizes of animals may be obtained from Farm Advisors. AUM can be converted to approximate tons of hay equivalent, since hay is roughly figured at 50% TDN or 1,000 pounds per ton. Therefore, 1 AUM = 0.4 tons of hay, or 2.5 AUM = 1 ton of hay.

The amount of feed obtained from a pasture is influenced greatly by grazing practices. All types of stock do not utilize pasture to the same degree of efficiency. Also, sufficient stock must be on hand to fully utilize feed produced. Therefore, in determining the amount of feed which may be obtained from a pasture, one should consider whether it will be used to maximum capacity.