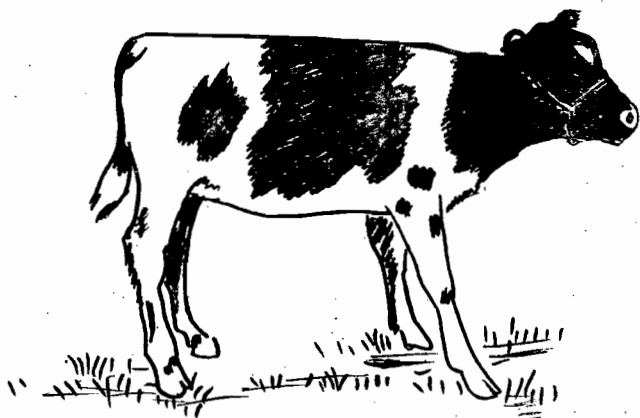


*Raising Dairy
Replacement
Heifers
IN GLENN CO.*



University of California
Agricultural Extension Service
Orland, California

RAISING DAIRY REPLACEMENT HEIFERS
(Cost and Directions)
(Figured on Holstein calf)

COST

ESTIMATED
COST FOR
PERIOD

TYPE FEED	DIRECTIONS	AMOUNT DAILY	NUMBER OF DAYS	TOTAL AMOUNT	ESTIMATED COST FOR PERIOD
I. From 2 days to 2 weeks: (12 days) (Start on colostrum for first 2 days) <u>Provide fresh, clean water at all times</u>					
Whole milk	Holstein calves should get	5 to 8 lbs. or	12 days	100 lbs.	\$ 3.20
Alfalfa hay	High quality, green and leafy	<u>7% of body weight</u> FREE CHOICE, 1 lb.	12 days	12 lbs.	.16
Calf Meal (concentrate)	Expose calf to it — rub it on his nose	FREE CHOICE, handful	12 days	5 lbs.	.26
II. 2 weeks to 12 weeks: (70 days) Wt. 193# at 12 weeks					
Milk replacement	Feed according to directions. Approximately 1 part to 5 parts water. Gradually reduce as amount of calf meal intake increases. Should end milk replacement by 10th to 12th wk.	1½ lbs. concentrated per day, mix with water	70 days	105 lbs.	18.00
Calf meal (concentrate)	Begin feeding and gradually increase up to 1½ lb. to 2 lbs. per day. At this point stop feeding milk replacement.	1½ to 2 lbs. per day	70 days	122 lbs.	6.40
Alfalfa hay	High quality, green, leafy	FREE CHOICE, 2 lbs. per day	70 days	150 lbs.	1.95
III. 12 weeks to 4 months: (30 days) Wt. 247 # at 4 mo.					
14% dairy mix	Gradually shift from calf meal to 14% dairy mix.	3½ to 5 lbs. by end of 4th month	30 days	110 lbs.	4.13
Alfalfa hay	High quality, green, leafy	FREE CHOICE, 3 to 5 lbs.	30 days	150 lbs.	1.95
				Total	\$36.05

SHOULD NOW BE PUT ON PASTURE

TYPE FEED	DIRECTIONS	AMOUNT DAILY	NUMBER OF DAYS	TOTAL AMOUNT	ESTIMATED COST FOR PERIOD
IV. <u>4 months to 6 months</u> : (60 days) Wt. 355 lbs. at 6 mo.					
Pasture	Put on at 4 months		60 days		\$ 6.00
Cheap grain mix or 14% dairy mix	Example (2 parts ground barley, 2 parts oats, 2 parts wheat bran, 1 part linseed meal)	2 to 3 lbs. daily	60 days	150 lbs.	4.50
Alfalfa hay	High quality	FREE CHOICE, 3 to 5 lbs.	60 days	250 lbs.	3.25
V. <u>6 months to 1 year</u> : (180 days) Wt. 632 lbs. at 1 year					
Pasture			180 days		18.00
Cheap grain mix	Mentioned above	2 to 3 lbs. daily	180 days	500 lbs.	15.00
Alfalfa hay	High quality	FREE CHOICE, 5 lbs.	180 days	900 lbs.	10.80
VI. <u>1 year to 2 years</u> (selling time) (360 days) Wt. 1069 lbs. at 2 years					
Pasture	Figuring that for 6 months poor pasture during the winter they would have to be supplemented with grain		360 days		36.00
Alfalfa hay	High quality	5 lbs. per day	360 days	1800 lbs.	23.40
Cheap grain	During dormant pasture season	2 lbs. per day	180 days	360 lbs.	10.00
					TOTAL FEED COST. . . . \$163.80

Dairy Cattle

FIGURED ON FOLLOWING BASIS:

Milk (3.8%)	\$3.20 cwt.	Pasture.	ave. \$3.00 per head per month
Milk replacement	17.00 cwt.	Alfalfa hay.	25.00 per ton
Calf meal.	5.25 cwt.		
14% Dairy Mix.	3.75 cwt.		
Rolled barley or equiv..	3.00 cwt.		

TOTAL EXPENSES

Original cost.	\$30.00
Total feed bill.	163.80
Death loss (5% of weaning price)	3.75
Veterinary expenses & medicine	5.00
Transportation	2.00
Other expense (breeding fees, etc.)	5.00
Labor: 10 min. per day - 120 days = 20 hrs. @ \$1.00 per hour for first 4 months	20.00
Labor: After 4 months, 2 hours per day for 50 head @ \$1 (20 months) \$1200. per head.	<u>24.00</u>
Total Investment	\$253.55

Total Investment, minus labor of \$44.00. . . . \$209.55

FEED BILL up to 4 months. \$36.05

FEED BILL up to 2 years \$163.80

END PRODUCT:

1050 lb., 24-month-old, bred heifer.

(These figures are based on feeding
a Holstein heifer.)

HOW IS YOUR HEIFER DOING?

<u>Age</u>	<u>Ayrshire</u>	<u>Guernsey</u>	<u>Holstein</u>	<u>Jersey</u>
Birth	72 lbs.	65 lbs.	90 lbs.	53 lbs.
1 month	89	77	112	67
3 months	158	133	193	121
6 months	293	260	355	243
9 months	433	389	509	360
1 year	538	490	632	450
15 months	638	584	746	530
18 months	725	663	845	601
21 months	818	737	952	665
2 years	902	818	1069	733
27 months	909	876	1151	816

Breakdown on Feed Expenses

Whole milk	100 lbs.	\$ 3.20
Milk replacement	105 lbs.	18.00
Calf meal	127 lbs.	6.66
14% dairy mix	110 lbs.	4.13
Cheap grain mix	1550 lbs.	30.30
Alfalfa hay	3262 lbs.	41.51
Pasture		<u>60.00</u>

Total feed cost \$163.80

Feed cost = 17¢ per lb. of gain.

KEEP YOUR CALF HEALTHY

The best way to protect the health of your calf is by feeding the right amount of the right feeds.

1. Feed at the same time each day.
2. Wash and sterilize the buckets you use for feeding milk.
3. Keep your calf in a clean, dry place.
4. Provide clean, fresh water.
5. Isolate sick animals immediately.

DISEASES

Protect your heifers from Brucellosis. As you know, the state law requires that all dairy heifers be vaccinated for Brucellosis between the ages of four and twelve months. The state pays for this. All you have to do is call your veterinarian when your calves are four months of age.

APPROXIMATE AGE TO BREED

Ayrshire	17 to 19 months old
Guernsey	16 to 18 months old
Holstein	18 to 20 months old
Jersey	15 to 17 months old

Resource Information:

Circular 435 - Lloyd P. Sharp and Wallace Sullivan
4-H Publication, "You and Your Dairy Calf."
Circular 107 - S. W. Mead
Extension Dairy Specialist, C. L. Pellisier

Prepared by
Ray G. Lyon, Farm Advisor
Glenn County
November, 1959
75 copies